

Lipo Laser Fat Reduction System



Model: LP680

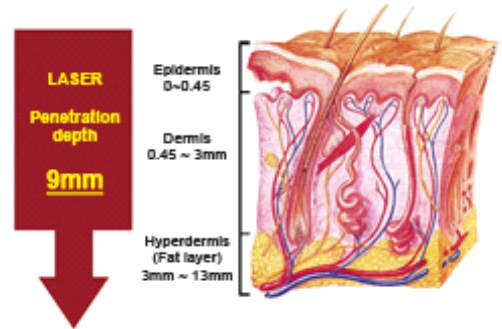
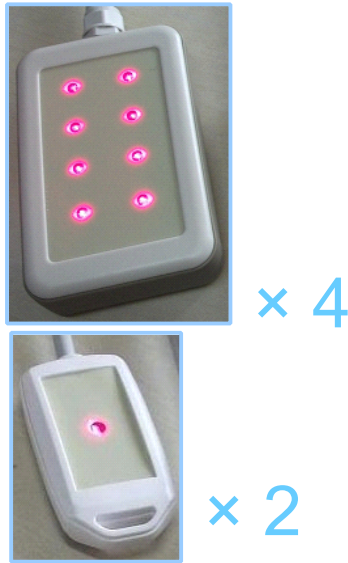
- ❖ Global advanced tech to reduce fat—635nm diode lipo laser
- ❖ Effective-safe-comfortable-fast-convenient fat reduction
- ❖ Noninvasive treatment, no pain
- ❖ Can solve the multiple problem areas: waistline, abdomen, back, buttocks & thigh areas, arms & underarms
- ❖ 6 paddles (34 diodes total) can do treatments for 2 people at the same time, or many body parts at the same time
- ❖ Don't need any cooling gel, and directly touch skin
- ❖ It does not need any labour (don't need you hold handle)
- ❖ Lower investment and quick money return

Specification

Wavelength	635nm
Laser type	635nm diode laser
Number of treatment probes	Normal standard: 6 handles, 4 big & 2 small Can attach more handles according to your demand
Number of diode laser	34
Single-laser output	100mw or more
LCD display	8inch big color LCD touch display
Language	English, Spanish or others
Working mode	Continuously or Pulse mode
Dimension	50*48*44cm
Net weight	15kg
Voltage	110V/220V

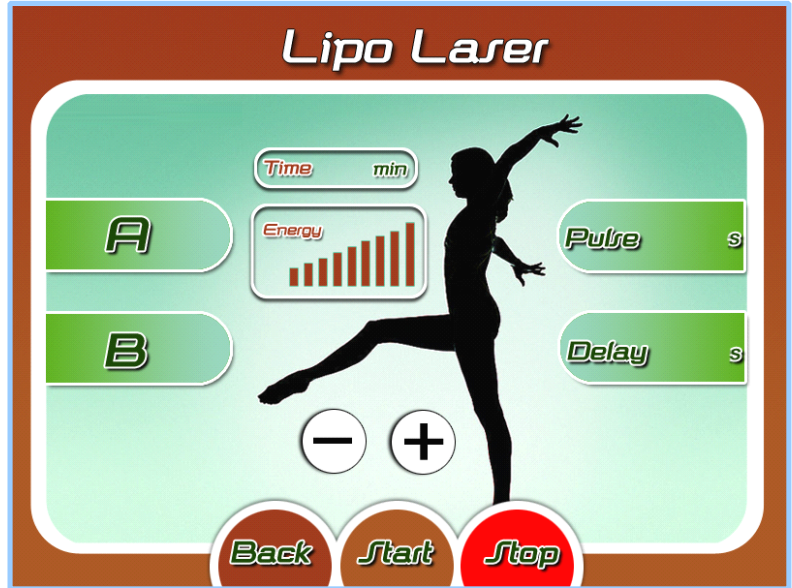
Treatment Therapy

Lipo Laser LP680 machine was designed to specifically for fat reduction and body contouring. It works much more effectively, safely and comfortable than the other slimming machines on the market. Utilizing the power of more than 100mw the most suitable to physical fat reduction, the 635nm diode laser deep blasts excess fat and melted. This technology is the latest and popular high-tech for fat reduction and body contouring.



MULTIPADS x 6 = 34 Lasers





Working mode A control 2 small paddles
Working mode B control 4 big paddles

Treatment time can be adjusted from 1 minute to 30 minutes

Treatment energy can be adjusted from level 1 to level 9

Pulse range is 0-5s

Delay range is 0-5s

Accessories



Power cord



keys



goggles for doctor



goggles for client



big belt*2



small belt *4